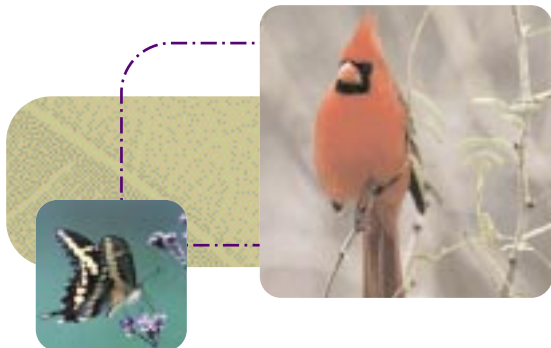


Have the herbicides been thoroughly tested?

All pesticides sold in the U.S. must be registered by the United States Environmental Protection Agency based on the submission of scientific studies showing that the pesticide will perform its intended function without unreasonable adverse effects to human health and the environment. The EPA defines unreasonable adverse effects as any unreasonable risk to man or the environment, taking into account the economic, social and environmental costs and benefits of the use of the pesticide. In fact, the herbicides we use are similar to the ones you may use on your lawn or in your garden.

Who applies the herbicides?

Our trained and professional applicators take special care to assure safe handling and precise applications. They treat only targeted trees and brush. These application specialists make safety their highest priority.



Questions or concerns?

If you have any questions about the herbicide application in your area, please call:

Dow AgroSciences, manufacturer of herbicides, developed this brochure to share accurate information on vegetation management.



www.vegetationmgmt.com

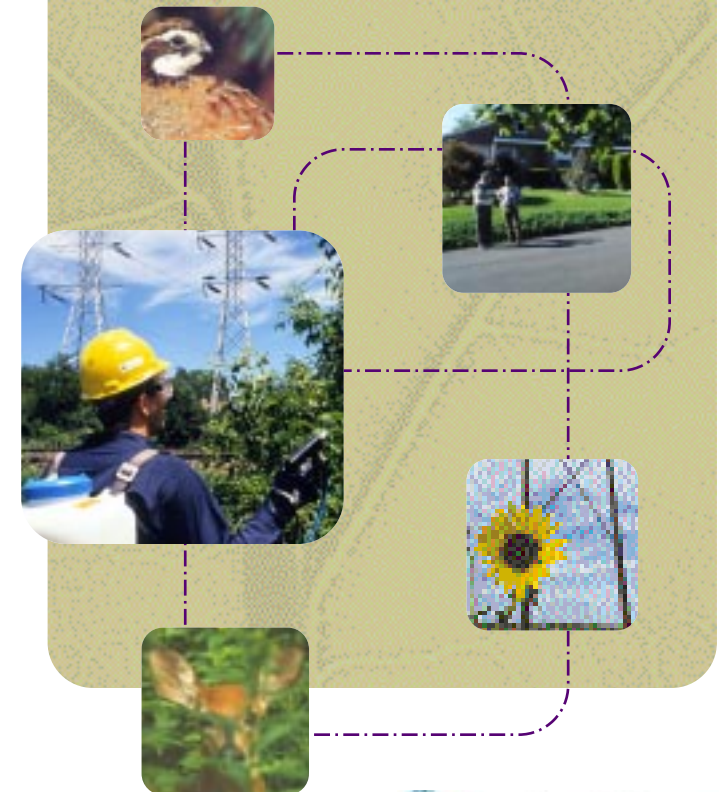
*Trademark of Dow AgroSciences LLC
Always read and follow label directions.
Quail image courtesy of Quail Unlimited, Inc.
520-C2-272-02
EPI00000

V01-000-037 (1/03) BR
010-50123



A Message for

Our Neighbors.



Dow AgroSciences

**Intelligent Solutions.
Dedicated Service.**



Sometime soon, vegetation growing beneath the powerline near your property will be receiving routine maintenance. This brochure addresses questions you may have about the work being done near your home.

Why manage vegetation?

Years of experience and study demonstrate that one of the most efficient ways to keep rights-of-way clear of unwanted trees and brush is through the careful and selective use of herbicides.

If you are the type who spends time tending your lawn or garden, you know controlling weeds is a tough job. No matter what you do – mow, pull or hoe – they just keep coming back.

Imagine the problems we have with brush and weedy pests along our hundreds of miles of powerlines.

Selectively controlling trees and weeds along powerlines and other rights-of-way keeps the power on. It assures safe and easy access for service and maintenance needs, and also preserves and enhances natural surroundings – including wildlife habitat – for all to enjoy.

Why my property?

Your property is located near a powerline right-of-way. Some vegetation bordering your property may hamper safe and efficient powerline use because:

- Trees and branches touching powerlines cause most service interruptions. Clearing trees helps prevent extended outages.
- Trees and brush limit repair crews access to powerlines. Controlling growth allows for thorough inspection and routine maintenance.
- Tall trees serve as bridges to electrical towers and lines. Children and animals sometimes can't resist temptation to climb and explore. Removing the trees promotes safety for your family and the environment, and assures a continuous flow of electricity.

Can't you just mow?

Trimming and mowing continue to play important roles in maintaining powerline rights-of-way. However, these alternatives sometimes trade one problem for another. For instance, mowing multiplies the vegetation problem. Because mowing only removes plant tops (stems, branches and leaves), root systems remain intact. This promotes rapid resprouting and spreading. Months later, where one tree had grown, several more grow back.

Herbicides, on the other hand, control the entire plant. This eliminates the need for more frequent mechanical treatments, like tree trimming and mowing.



Mechanical methods can be harsh on wildlife, such as ground-nesting birds. In addition to posing less danger to operators from flying debris, herbicide applications mean far less erosion, soil compaction and ruts caused by heavy machinery moving over your property.

What's selective control?

Selective herbicides remove only unwanted weeds, brush and trees from rights-of-way. By removing the competition for moisture, sunlight and nutrients, a meadowlike setting filled with beneficial grasses and wildflowers becomes established. This adds beauty and reduces maintenance activities. In a 50-year ongoing study, Purdue University and Pennsylvania State University researchers have studied differences between selective herbicide use and mechanical methods on powerline rights-of-way. Results show that herbicides enhance wildlife habitat by promoting grasses, low-growing shrubs and other ground cover that birds, deer and small animals prefer.

We may use nonselective herbicides in situations where total vegetation control is necessary. We also practice precision application with these herbicides by using buffer zones to provide an extra measure of precaution by carefully avoiding gardens, flowers and other beneficial plants important to you.

